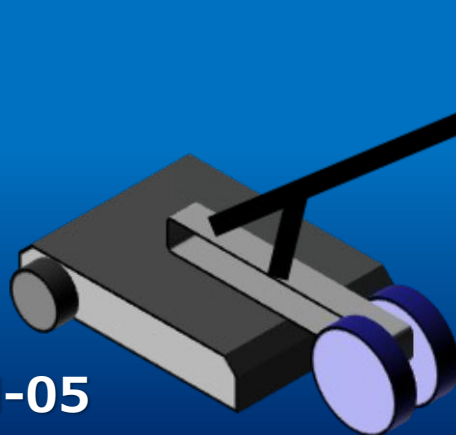




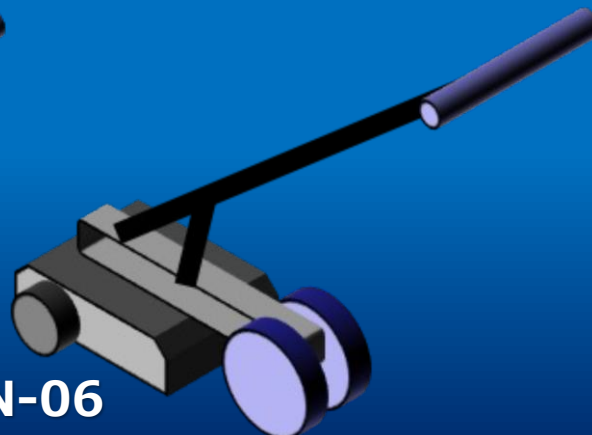
Next-Generation Ground-Penetrating Radar (GN-05/GN-06)

Under development

GN-05



GN-06



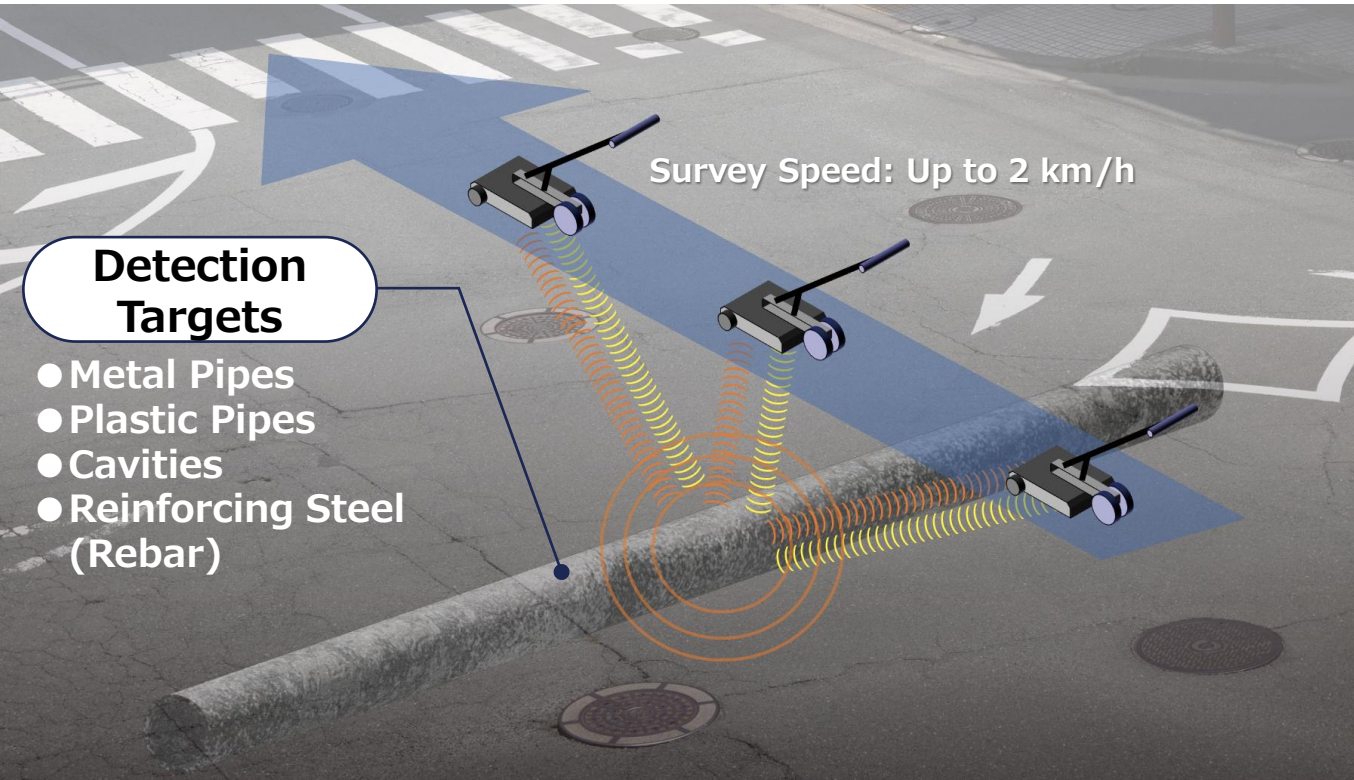


Next-Generation Ground-Penetrating Radar

Under development

NIPPON SIGNAL

Capable of detecting underground utilities, buried pipes, and cavities using radio waves. We are developing a next-generation model to meet market needs for deeper detection depth.



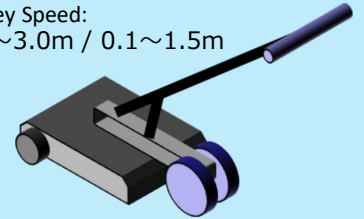
Detection Targets

- Metal Pipes
- Plastic Pipes
- Cavities
- Reinforcing Steel (Rebar)

Survey Speed: Up to 2 km/h

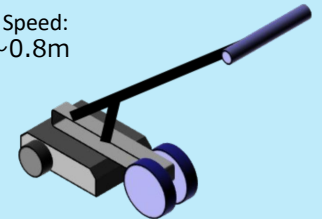
GN-05

Survey Speed:
0.5~3.0m / 0.1~1.5m



GN-06

Survey Speed:
0.05~0.8m





Next-Generation Ground-Penetrating Radar

Under development

NIPPON SIGNAL

Provides high-performance detection for a variety of materials with simple operation.

1

High Detection Performance

- Detects objects regardless of material (Metal pipes, plastic pipes)
- High-resolution detection enables identification of buried pipes directly beneath rebar

2

Compact and Lightweight Design

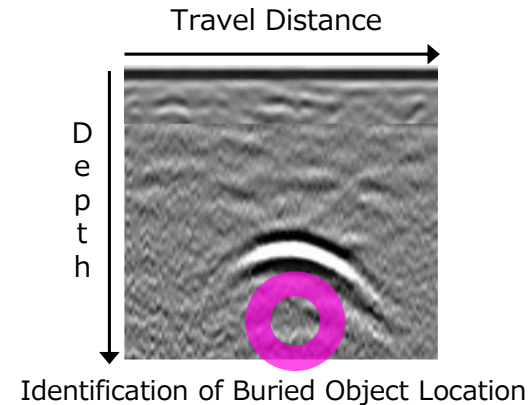
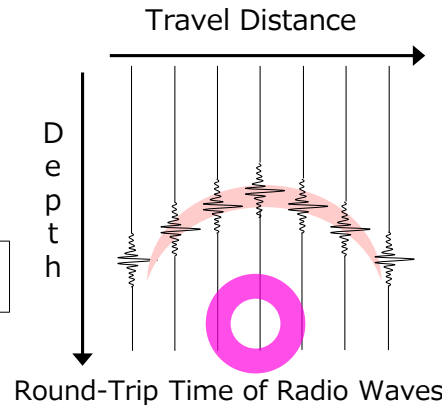
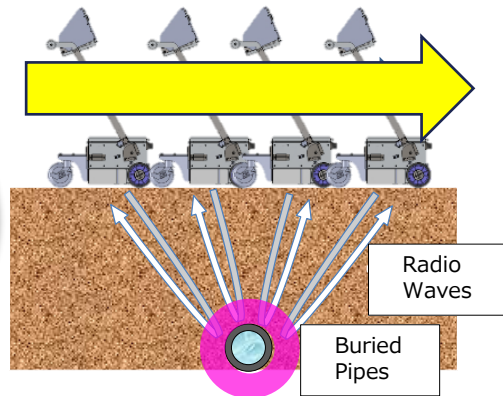
- Equipped with a compact, high-performance antenna
- Lightweight (approx. 18 kg) Can be carried by a single person

3

Easy Operability

- Simply press the start button—no complicated setup required
- Equipped with AI-based automatic detection (optional)

Operating Principle of Ground Penetrating Radar

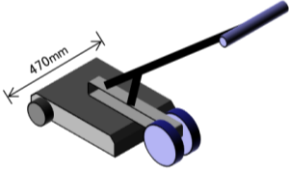
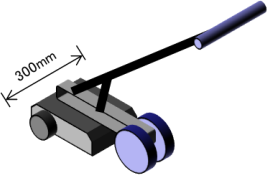




Next-Generation Ground-Penetrating Radar

Under development

NIPPON SIGNAL

| Product Name | | GN-05 | GN-06 |
|---|------------------|--|---|
| Appearance | |  |  |
| Detection Targets | | Metal Pipes, Plastic Pipes, Cavities, Reinforcing Steel (Rebar) | |
| Survey Speed | | Up to 2 km/h | |
| Transmission Method / Reception Method | | SFCW (Stepped Frequency Continuous Wave) Method | |
| Detection Depth | | 0.5~3.0m / 0.1~1.5m | 0.05~0.8m |
| Transmit Frequency | | 70MHz~300MHz / 70MHz~800MHz | 100MHz~1.4GHz |
| Continuous Operating Time | | 2hours | |
| Operating Temperature | | -10~50℃、10~90% | |
| Ingress Protection | | Equivalent to JIS C 0920 IPx3 Protection Rating | |
| Dimensions | In Use | L 650 × W 300 × H 900 mm | L 650 × W 300 × H 900 mm |
| | During Transport | L 650 × W 300 × H 400 mm | L 650 × W 300 × H 400 mm |
| Weight | | 18kg | 18kg |
| Components Included | | Radar Unit, Battery, Charger | |

※The tablet PC for operating the ground penetrating radar is optional.